



Meadow Close | | Bembridge | PO35 5YJ

**Offers In The Region Of £460,000**



## Meadow Close | Bembridge | PO35 5YJ Offers In The Region Of

Nestled in the charming village of Bembridge, there is a delightful opportunity to acquire a detached bungalow that perfectly balances comfort and convenience. This well-appointed property boasts three spacious bedrooms, making it an ideal home for families or those seeking extra space for guests or a home office.

Upon entering, you are welcomed into a generous reception room that serves as the heart of the home, providing a warm and inviting atmosphere for relaxation and entertaining. The layout is thoughtfully designed, ensuring a seamless flow between the living areas and the well-equipped kitchen.

The bungalow features two modern bathrooms, offering both functionality and privacy for the household. This is particularly advantageous for busy mornings or when hosting

- DETACHED BUNGALOW
- LOCATED IN BEMBRIDGE
- CLOSE TO LOCAL AMENITIES
- CHAIN FREE
- 3 BEDROOMS
- LARGE REAR GARDEN
- PRIVATE DRIVEWAY

**Living Room**  
10'11 x 20'2 (3.33m x 6.15m)

**Kitchen**  
7'7 x 10'4 (2.31m x 3.15m)

**Conservatory**  
8'3 x 20'5 (2.51m x 6.22m)

**Bedroom 1**  
8' x 13'5 (2.44m x 4.09m)

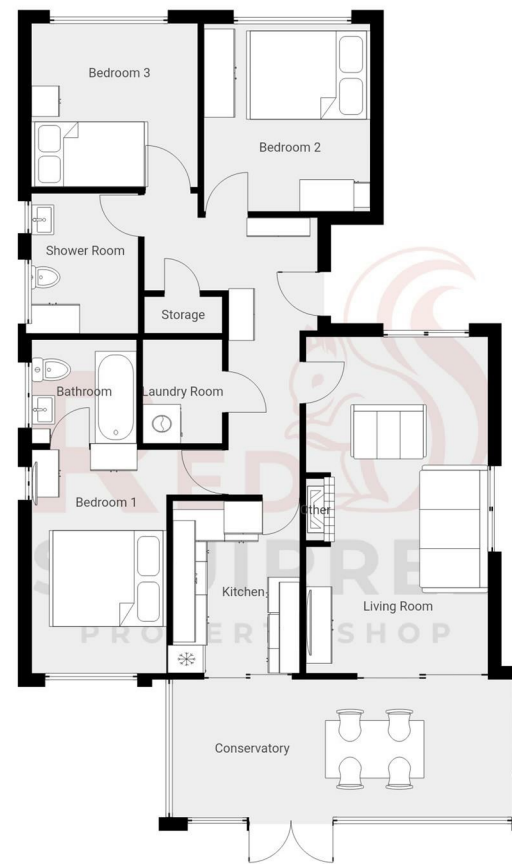
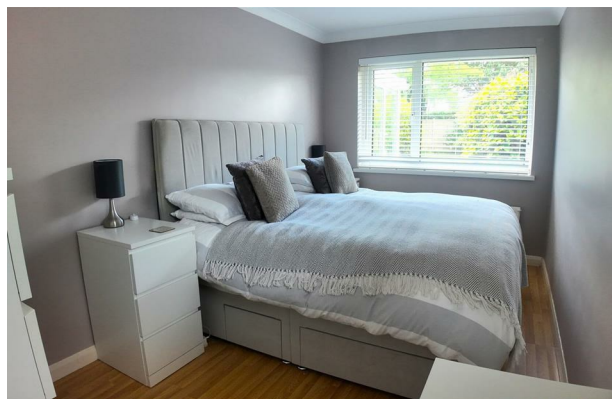
**Bedroom 2**  
9'11 x 11'3 (3.02m x 3.43m)

**Bedroom 3**  
9'9 x 9'11 (2.97m x 3.02m)

**Hallway**

**Shower Room**  
6'4 x 8'4 (1.93m x 2.54m)

**Rear Garden**



Energy Efficiency Rating		Current	Potential
<i>Very energy efficient - lower running costs</i>			
(92 plus)	A		
(81-91)	B		
(69-80)	C	71	75
(55-68)	D		
(39-54)	E		
(21-38)	F		
(1-20)	G		
<i>Not energy efficient - higher running costs</i>			
<b>England &amp; Wales</b>		EU Directive 2002/91/EC	

Council Tax Band **E**  
EPC Rating **C**

3 Langely Court Pyle Street  
Newport  
Isle of Wight  
PO30 1LA  
01983 521212

enquiries@redsquirrelpropertyshop.co.uk  
www.redsquirrelpropertyshop.co.uk

THIS FLOOR PLAN IS PROVIDED WITHOUT WARRANTY OF ANY KIND. SENSOPHA DISCLAIMS ANY WARRANTY INCLUDING, WITHOUT LIMITATION, SATISFACTORY QUALITY OR ACCURACY OF DIMENSIONS.